



Cambridge International AS & A Level

INFORMATION TECHNOLOGY

9626/02

Paper 2 Practical

For examination from 2025

MARK SCHEME

Maximum Mark: 90

Specimen

This document has **12** pages.

Generic Marking Principles

These general marking principles must be applied by all examiners when marking candidate answers. They should be applied alongside the specific content of the mark scheme or generic level descriptions for a question. Each question paper and mark scheme will also comply with these marking principles.

GENERIC MARKING PRINCIPLE 1:

Marks must be awarded in line with:

- the specific content of the mark scheme or the generic level descriptions for the question
- the specific skills defined in the mark scheme or in the generic level descriptions for the question
- the standard of response required by a candidate as exemplified by the standardisation scripts.

GENERIC MARKING PRINCIPLE 2:

Marks awarded are always **whole marks** (not half marks, or other fractions).

GENERIC MARKING PRINCIPLE 3:

Marks must be awarded **positively**:

- marks are awarded for correct/valid answers, as defined in the mark scheme. However, credit is given for valid answers which go beyond the scope of the syllabus and mark scheme, referring to your Team Leader as appropriate
- marks are awarded when candidates clearly demonstrate what they know and can do
- marks are not deducted for errors
- marks are not deducted for omissions
- answers should only be judged on the quality of spelling, punctuation and grammar when these features are specifically assessed by the question as indicated by the mark scheme. The meaning, however, should be unambiguous.

GENERIC MARKING PRINCIPLE 4:

Rules must be applied consistently, e.g. in situations where candidates have not followed instructions or in the application of generic level descriptions.

GENERIC MARKING PRINCIPLE 5:

Marks should be awarded using the full range of marks defined in the mark scheme for the question (however; the use of the full mark range may be limited according to the quality of the candidate responses seen).

GENERIC MARKING PRINCIPLE 6:

Marks awarded are based solely on the requirements as defined in the mark scheme. Marks should not be awarded with grade thresholds or grade descriptions in mind.

Question	Answer	Marks
Task 1 below for example of conceptual Entity Relationship Diagram (ERD).		
1	ERD drawn with rounded rectangles and correct 1-to-many links	1
	Contains data types, key fields and field lengths	1
	Teacher entity Both fields alphanumeric	1
	Both fields appropriate length	1
	TeacherID set as primary key	1
	Class entity ClassID set as primary key	1
	Day and Time set as Date/Time	1
	All other data types alphanumeric	1
	All attributes of appropriate length	1
	TeacherID set as foreign key	1
	StudentID set as foreign key	1
	Student entity StudentID set as primary key	1
	DateOfBirth/DOB set as Date/Time data type	1
	All other attributes set to alphanumeric	1
All alphanumeric attributes appropriate length	1	

Question	Answer	Marks
Task 2 below for example of dance worksheet.		
2	Worksheet dance has lists created in correct columns	1
	Columns O and P are 100% accurate with all data ...	1
	... and no duplicates/spaces in list ...	1
	... sorted into alphabetical order	1
	Cell Q2 has a list of months displayed ...	1
	Using the formula =TRANSPOSE(B1:M1)	1

Question	Answer	Marks
Task 3 below for example of validation rules.		
3	Cell B1 contains validation set to the list ...	1
	... dance!\$O\$2:\$O\$9	1
	Cell B2 contains validation set to the list dance!\$P\$2:\$P\$6	1
	Cell B3 contains validation set to the list dance!\$Q\$2:\$Q\$13	1

Question	Answer	Marks
Task 4 below for example of specfind worksheet values.		
4	A1:A3 formatted right-aligned, B1:B3 bold and centre-aligned	1

Question	Answer	Marks
Task 5 below for example of spreadsheet formulas.		
5	Cell B5 contains the formula =INDEX(...)	1
	... dance!B2:M20 ...	1
	,MATCH(...)	1
	... specfind!B2 ...	1
	... & ...	1
	... "& ...	1
	... specfind!B1 ...	1
	... ,dance!A2:A20 ...	1
	... ,0) ...	1
	,MATCH(...)	1
	... specfind!B3 ...	1
	... ,dance!Q2:Q13 ...	1
	... ,0) ...	1
	... ,1)	1

Question	Answer	Marks
Task 6 below for example of spreadsheet values – searching.		
6	Task 6a correct search and results	1
	Task 6b correct search and results	1
	Task 6c correct search and results	1

Question	Answer	Marks
Task 7 below for example of chart calculation worksheet.		
7	Chart worksheet chart created and all required cells replicated	1
	New column has been inserted between A and B	1
	Cell B2 contains =LEFT(...)	1
	... A2, ...	1
	... FIND(...)	1
	... " ", ...	1
	... A2 ...	1
	... ,2) ...	1
	... -1)	1
	Cell R2 contains =SUMIF(...)	1
	... \$B\$2:\$B\$20 ...	1
	... ,\$Q2	1
	Correct absolute and relative referencing	1
	... ,C\$2:C\$20 ...	1
	Correct absolute and relative referencing	1
Replicated to AC6	1	

Question	Answer	Marks
Task 8 below for example of chart.		
8	Chart created with an appropriate chart type	1
	Chart created with an appropriate title	1
	Chart created with appropriate axis titles	1
	Chart created with appropriate axis labels	1
	Chart created with a legend for all 5 class types	1
	Chart created with the correct data series/results	1

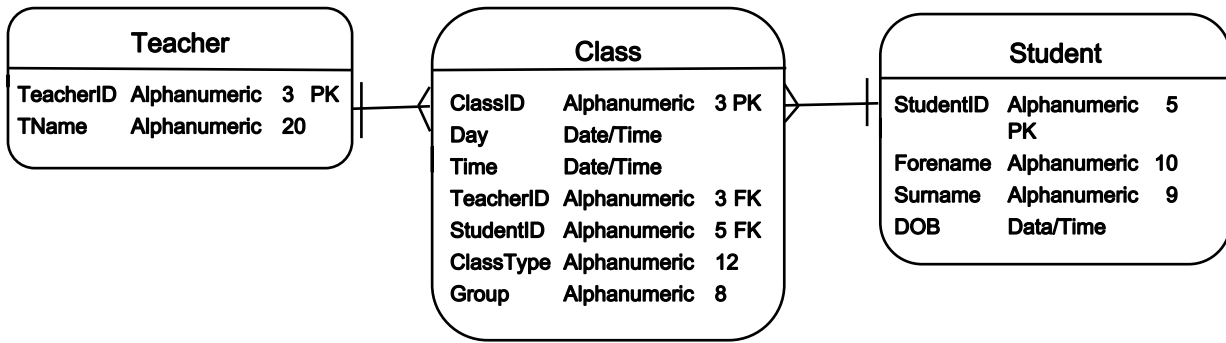
Question	Answer	Marks
9	Image ratio of software set to 16 : 9	1
	Resolution 1024 × 576	1
	First clip trimmed to 7 seconds	1

Question	Answer	Marks
10	Still images extracted from first and last frames ...	1
	... both images saved in suitable file format, with correct filenames (dance1 and dance3)	1

Question	Answer	Marks
11	0 seconds: Title background set to dance1	1
	Title Barong Ket accurate, top left	1
	Title with appropriate size	1
	4 seconds: Title and background retained with no adjustment/movement	1
	Traditional Balinese Dance accurate, bottom right	1
	Set as a subtitle with appropriate size	1
	8.2 seconds: Clip dance2 placed as specified with no text	1
	15 seconds: Background image dance3	1
	Audio clip specvoice.mp3 starts	1
	28 seconds: Smooth 2 second transition into video file from 28 to 30 seconds	1
	39.2 seconds: Black background for credits	1
	Credits scroll up the screen	1
	Credits include: Edited by: candidate name, centre number, candidate number	1
	Filmed by: GBRvideo	1
	Audio by: KMBaudio	1
	Credits of appropriate size with appropriate blank lines as spacing between credits	1
	Appropriate length for credits – readable speed	1
All text in an easily read font, appropriate colour with good contrast	1	
All text in a consistent sans serif font	1	

Question	Answer	Marks
12	Movie exported/saved as BarongKet_ZZ999_9999.mp4 format	1

Physical ERD



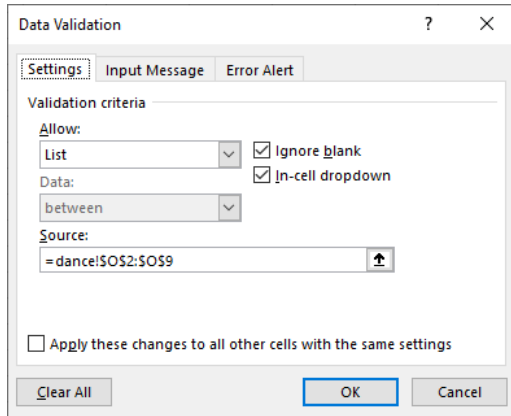
Teacher entity	ERD drawn with rounded rectangles and correct 1-to-many links	1 mark
	Contains data types, key fields and field lengths	1 mark
Class	Both fields alphanumeric	1 mark
	Both fields appropriate length	1 mark
Students	TeacherID set as primary key	1 mark
	ClassID set as primary key	1 mark
	Day and Time set as Date/Time	1 mark
	All other data types alphanumeric	1 mark
	All attributes of appropriate length	1 mark
Students	TeacherID set as foreign key	1 mark
	StudentID set as foreign key	1 mark
	StudentID set as primary key	1 mark
	DateOfBirth/DOB set as Date/Time data type	1 mark
	All other attributes set to alphanumeric	1 mark
	All alphanumeric attributes appropriate length	1 mark

	O	P	Q
1	Teacher	Class	Month
2	Adam	Ballet	January
3	Catherine	Contemporary	February
4	Donna	Modern	March
5	James	Street	April
6	Karla	Tap	May
7	Kat		June
8	Mei Mei		July
9	Zoe		August
10			September
11			October
12			November
13			December

Cell Q2
 =TRANSPOSE(B1:M1)

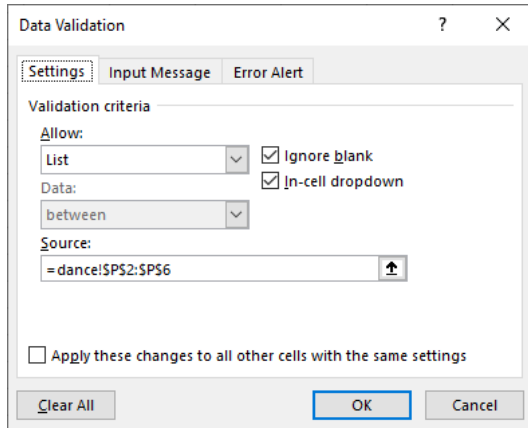
Cell Q2	dance	Lists created in correct columns	1 mark
	Columns O and P	100% accurate with all data and no duplicates / spaces in list ...	1 mark 1 mark
Cell Q2		... sorted into alphabetical order	1 mark
		List of months displayed as shown =TRANSPOSE(B1:M1)	1 mark 1 mark

Cell B1



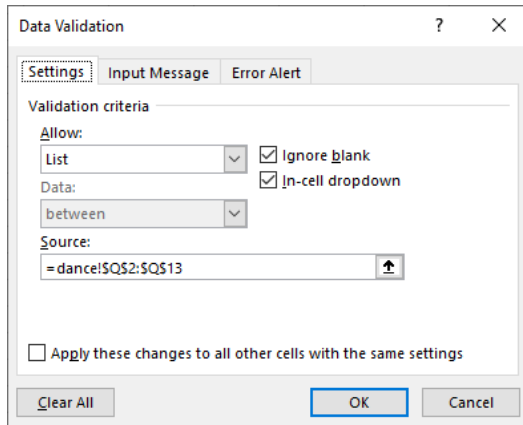
Cell B1 Validation set to list ... 1 mark
... dance!\$O\$2:\$O\$9 1 mark

Cell B2



Cell B2 List from specdance!\$P\$2:\$P\$6 1 mark

Cell B3



Cell B3 List from dance!\$Q\$2:\$Q\$13 1 mark

	A	B
1	Teacher name	Karla
2	Class	Ballet
3	Month	September

Formatted as shown 1 mark

=INDEX(dance!B2:M20,MATCH(specfind!B2&" "&specfind!B1,dance!A2:A20,0),
MATCH(specfind!B3,dance!Q2:Q13,0),1)

Cell B5 =INDEX(...) 1 mark
 ... dance!B2:M20 ... 1 mark
 ,MATCH(...) 1 mark
 ... specfind!B2 ... 1 mark
 ... & ... 1 mark
 ... " "& ... 1 mark
 ... specfind!B1 ... 1 mark
 ... ,dance!A2:A20 ... 1 mark
 ... ,0) ... 1 mark
 ,MATCH(...) 1 mark
 ... specfind!B3 ... 1 mark
 ... ,dance!Q2:Q13 ... 1 mark
 ... ,0) ... 1 mark
 ... ,1) 1 mark

6a Correct search and results 1 mark
 6b Correct search and results 1 mark
 6c Correct search and results 1 mark

6a

	A	B
1	Teachers name	Karla
2	Class	Ballet
3	Month	September
4		
5	Number of students taught	197

6b

	A	B
1	Teacher name	James
2	Class	Street
3	Month	November
4		
5	Number of students taught	732

6c

	A	B
1	Teachers name	Adam
2	Class	Tap
3	Month	June
4		
5	Number of students taught	65

	A	B	C	D	E	F	G	H	I	J	K	L	M	N	O	P	Q	R	S	T	U	V	W	X	Y	Z	AA	AB	AC
1	Class and Teacher		January	February	March	April	May	June	July	August	September	October	November	December		Class	January	February	March	April	May	June	July	August	September	October	November	December	
2	Tap Donna	Tap	389	398	190	381	348	437	146	326	455	183	386	65	Ballet	428	576	590	646	644	559	563	418	605	439	386	386	460	
3	Modern Donna	Modern	90	353	655	406	398	199	387	160	246	268	409	179	Street	1351	1499	1150	1817	1754	1436	1009	2057	1848	1195	1873	546		
4	Street Donna	Street	979	595	285	471	564	267	254	310	510	429	186	428	Contemporary	829	613	552	706	604	724	829	754	303	684	1016	1008		
5	Contemporary Donna	Contemporary	291	66	120	202	219	144	81	142	52	299	171	285	Modern	1044	1346	1166	960	1104	736	1063	720	318	1091	1289	605		
6	Modern Karla	Modern	591	433	398	429	79	188	132	194	393	538	246	145	Tap	1052	1069	975	1504	1304	965	1283	1448	1503	523	1424	1083		
7	Ballet Karla	Ballet	54	212	81	180	174	153	96	78	197	113	85	61															
8	Contemporary Karla	Contemporary	414	328	57	302	251	280	386	398	102	115	542	402															
9	Street James	Street	58	166	741	488	251	344	384	313	529	275	732	46															
10	Street Zoe	Street	121	367	47	561	175	554	77	666	436	591	664	52															
11	Tap Zoe	Tap	387	350	177	428	333	87	445	426	399	91	350	450															
12	Contemporary Kat	Contemporary	83	80	88	88	48	60	43	78	58	77	90	77															
13	Ballet Kat	Ballet	220	232	245	236	212	200	210	78	226	177	154	179															
14	Ballet Catherine	Ballet	91	89	178	152	166	151	108	386	119	75	126	158															
15	Ballet Adam	Ballet	63	43	86	78	92	55	51	76	64	74	41	62															
16	Tap Adam	Tap	213	153	212	470	272	65	299	310	486	87	361	426															
17	Tap Mei Mei	Tap	63	168	396	225	251	376	395	386	163	162	327	144															
18	Modern Mei Mei	Modern	363	560	113	125	627	349	546	366	279	255	634	331															
19	Street Mei Mei	Street	193	371	77	292	264	271	284	561	40	61	120	264															
20	Contemporary Mei Mei	Contemporary	121	139	87	114	86	240	119	141																			

Chart worksheet created and all shaded cells replicated 1 mark
New column inserted between A and B 1 mark

	A	B
1	Class and Teacher	
2	Tap Donna	=LEFT(A2,FIND(" ",A2,2)-1)
3	Modern Donna	=LEFT(A3,FIND(" ",A3,2)-1)
4	Street Donna	=LEFT(A4,FIND(" ",A4,2)-1)
5	Contemporary Donna	=LEFT(A5,FIND(" ",A5,2)-1)
6	Modern Karla	=LEFT(A6,FIND(" ",A6,2)-1)
7	Ballet Karla	=LEFT(A7,FIND(" ",A7,2)-1)
8	Contemporary Karla	=LEFT(A8,FIND(" ",A8,2)-1)
9	Street James	=LEFT(A9,FIND(" ",A9,2)-1)
10	Street Zoe	=LEFT(A10,FIND(" ",A10,2)-1)
11	Tap Zoe	=LEFT(A11,FIND(" ",A11,2)-1)
12	Contemporary Kat	=LEFT(A12,FIND(" ",A12,2)-1)
13	Ballet Kat	=LEFT(A13,FIND(" ",A13,2)-1)
14	Ballet Catherine	=LEFT(A14,FIND(" ",A14,2)-1)
15	Ballet Adam	=LEFT(A15,FIND(" ",A15,2)-1)
16	Tap Adam	=LEFT(A16,FIND(" ",A16,2)-1)
17	Tap Mei Mei	=LEFT(A17,FIND(" ",A17,2)-1)
18	Modern Mei Mei	=LEFT(A18,FIND(" ",A18,2)-1)
19	Street Mei Mei	=LEFT(A19,FIND(" ",A19,2)-1)
20	Contemporary Mei Mei	=LEFT(A20,FIND(" ",A20,2)-1)

B2 =LEFT(...) 1 mark
... A2, ... 1 mark
... FIND(...) 1 mark
... " ", ... 1 mark
... A2 ... 1 mark
... ,2) ... 1 mark
... -1) 1 mark
Replicated to B20 1 mark

	Q	R	S	T
1	Class	January	February	March
2	Ballet	=SUMIF(\$B\$2:\$B\$20,\$Q2,C\$2:C\$20)	=SUMIF(\$B\$2:\$B\$20,\$Q2,D\$2:D\$20)	=SUMIF(\$B\$2:\$B\$20,\$Q2,E\$2:E\$20)
3	Street	=SUMIF(\$B\$2:\$B\$20,\$Q3,C\$2:C\$20)	=SUMIF(\$B\$2:\$B\$20,\$Q3,D\$2:D\$20)	=SUMIF(\$B\$2:\$B\$20,\$Q3,E\$2:E\$20)
4	Contemporary	=SUMIF(\$B\$2:\$B\$20,\$Q4,C\$2:C\$20)	=SUMIF(\$B\$2:\$B\$20,\$Q4,D\$2:D\$20)	=SUMIF(\$B\$2:\$B\$20,\$Q4,E\$2:E\$20)
5	Modern	=SUMIF(\$B\$2:\$B\$20,\$Q5,C\$2:C\$20)	=SUMIF(\$B\$2:\$B\$20,\$Q5,D\$2:D\$20)	=SUMIF(\$B\$2:\$B\$20,\$Q5,E\$2:E\$20)
6	Tap	=SUMIF(\$B\$2:\$B\$20,\$Q6,C\$2:C\$20)	=SUMIF(\$B\$2:\$B\$20,\$Q6,D\$2:D\$20)	=SUMIF(\$B\$2:\$B\$20,\$Q6,E\$2:E\$20)

R2 =SUMIF(...) 1 mark
... \$B\$2:\$B\$20... 1 mark
... , \$Q2 1 mark
Correct absolute and relative referencing 1 mark
... , C\$2:C\$20 ... 1 mark
Correct absolute and relative referencing 1 mark
Replicated to AC6 1 mark

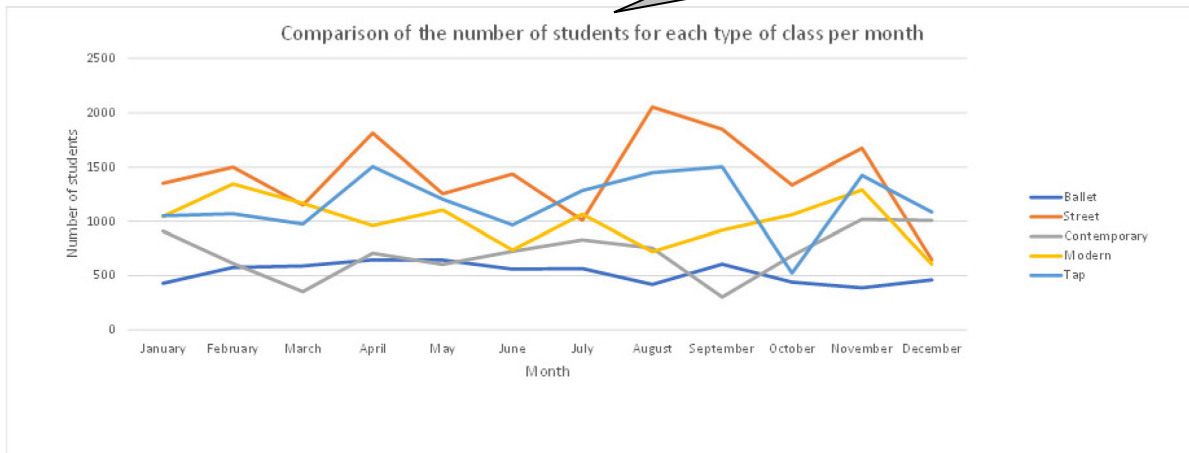
	U	V	W
1	April	May	June
2	=SUMIF(\$B\$2:\$B\$20,\$Q2,F\$2:F\$20)	=SUMIF(\$B\$2:\$B\$20,\$Q2,G\$2:G\$20)	=SUMIF(\$B\$2:\$B\$20,\$Q2,H\$2:H\$20)
3	=SUMIF(\$B\$2:\$B\$20,\$Q3,F\$2:F\$20)	=SUMIF(\$B\$2:\$B\$20,\$Q3,G\$2:G\$20)	=SUMIF(\$B\$2:\$B\$20,\$Q3,H\$2:H\$20)
4	=SUMIF(\$B\$2:\$B\$20,\$Q4,F\$2:F\$20)	=SUMIF(\$B\$2:\$B\$20,\$Q4,G\$2:G\$20)	=SUMIF(\$B\$2:\$B\$20,\$Q4,H\$2:H\$20)
5	=SUMIF(\$B\$2:\$B\$20,\$Q5,F\$2:F\$20)	=SUMIF(\$B\$2:\$B\$20,\$Q5,G\$2:G\$20)	=SUMIF(\$B\$2:\$B\$20,\$Q5,H\$2:H\$20)
6	=SUMIF(\$B\$2:\$B\$20,\$Q6,F\$2:F\$20)	=SUMIF(\$B\$2:\$B\$20,\$Q6,G\$2:G\$20)	=SUMIF(\$B\$2:\$B\$20,\$Q6,H\$2:H\$20)

	X	Y	Z
1	July	August	September
2	=SUMIF(\$B\$2:\$B\$20,\$Q2,I\$2:I\$20)	=SUMIF(\$B\$2:\$B\$20,\$Q2,J\$2:J\$20)	=SUMIF(\$B\$2:\$B\$20,\$Q2,K\$2:K\$20)
3	=SUMIF(\$B\$2:\$B\$20,\$Q3,I\$2:I\$20)	=SUMIF(\$B\$2:\$B\$20,\$Q3,J\$2:J\$20)	=SUMIF(\$B\$2:\$B\$20,\$Q3,K\$2:K\$20)
4	=SUMIF(\$B\$2:\$B\$20,\$Q4,I\$2:I\$20)	=SUMIF(\$B\$2:\$B\$20,\$Q4,J\$2:J\$20)	=SUMIF(\$B\$2:\$B\$20,\$Q4,K\$2:K\$20)
5	=SUMIF(\$B\$2:\$B\$20,\$Q5,I\$2:I\$20)	=SUMIF(\$B\$2:\$B\$20,\$Q5,J\$2:J\$20)	=SUMIF(\$B\$2:\$B\$20,\$Q5,K\$2:K\$20)
6	=SUMIF(\$B\$2:\$B\$20,\$Q6,I\$2:I\$20)	=SUMIF(\$B\$2:\$B\$20,\$Q6,J\$2:J\$20)	=SUMIF(\$B\$2:\$B\$20,\$Q6,K\$2:K\$20)

	AA	AB	AC
1	October	November	December
2	=SUMIF(\$B\$2:\$B\$20,\$Q2,L\$2:L\$20)	=SUMIF(\$B\$2:\$B\$20,\$Q2,M\$2:M\$20)	=SUMIF(\$B\$2:\$B\$20,\$Q2,N\$2:N\$20)
3	=SUMIF(\$B\$2:\$B\$20,\$Q3,L\$2:L\$20)	=SUMIF(\$B\$2:\$B\$20,\$Q3,M\$2:M\$20)	=SUMIF(\$B\$2:\$B\$20,\$Q3,N\$2:N\$20)
4	=SUMIF(\$B\$2:\$B\$20,\$Q4,L\$2:L\$20)	=SUMIF(\$B\$2:\$B\$20,\$Q4,M\$2:M\$20)	=SUMIF(\$B\$2:\$B\$20,\$Q4,N\$2:N\$20)
5	=SUMIF(\$B\$2:\$B\$20,\$Q5,L\$2:L\$20)	=SUMIF(\$B\$2:\$B\$20,\$Q5,M\$2:M\$20)	=SUMIF(\$B\$2:\$B\$20,\$Q5,N\$2:N\$20)
6	=SUMIF(\$B\$2:\$B\$20,\$Q6,L\$2:L\$20)	=SUMIF(\$B\$2:\$B\$20,\$Q6,M\$2:M\$20)	=SUMIF(\$B\$2:\$B\$20,\$Q6,N\$2:N\$20)

Chart

- Appropriate chart type 1 mark
- Appropriate title 1 mark
- Appropriate axis titles 1 mark
- Appropriate axis labels 1 mark
- Legend for all 5 class types 1 mark
- Correct data series/results 1 mark



Video file dance2_

Image ratio of software set to 16 : 9	1 mark
Resolution 1024 × 576	1 mark
First clip trimmed to 7 seconds	1 mark

Image files dance1 and dance3**Images dance1 and dance3**

Still images extracted from first and last frames ...	1 mark
... both images saved in suitable file format, with correct filenames (dance1 and dance3)	1 mark

Video file BarongKet_

0 seconds:	Title background set to dance1	1 mark
	Title Barong Ket accurate, top left	1 mark
	Title with appropriate size	1 mark
4 seconds:	Title and background retained with no adjustment/movement	1 mark
	Traditional Balinese Dance accurate, bottom right	1 mark
	Set as a subtitle with appropriate size	1 mark
8.2 seconds:	Clip dance2 placed as specified with no text	1 mark
15 seconds:	Background image dance3	1 mark
	Audio clip specvoice.mp3 starts	1 mark
28 seconds:	Smooth 2 second transition into video file from 28 to 30 seconds	1 mark
39.2 seconds:	Black background for credits	1 mark
	Credits scroll up the screen	1 mark
	Credits include:	
	Edited by: candidate name, centre number, candidate number	1 mark
	Filmed by: GBRvideo	1 mark
	Audio by: KMBAudio	1 mark
	Credits of appropriate size with appropriate blank lines as spacing between credits	1 mark
	Appropriate length for credits – readable speed	1 mark
	All text in an easily read font, appropriate colour with good contrast	1 mark
	All text in a consistent sans serif font	1 mark
	Movie exported/saved as BarongKet_ZZ999_9999.mp4	1 mark