

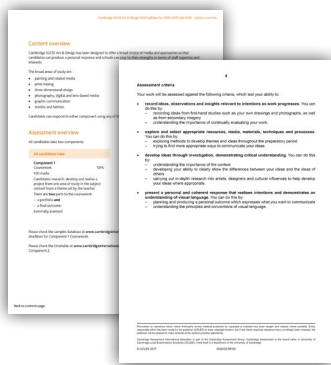


Support for Cambridge IGCSE™ (9–1) Art & Design 0989

Supporting you every step of the way

We provide a wide range of support so that you can give your learners the best possible preparation for Cambridge qualifications. Here is a list of the teaching and learning support available for the Cambridge IGCSE (9–1) Art & Design 0989 syllabus.

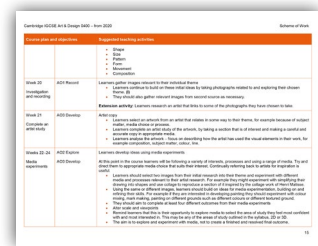
Our support material is available online through the School Support Hub at: www.cambridgeinternational.org/support



Syllabus and assessment materials

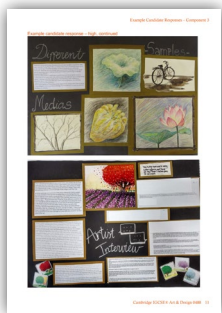
The syllabus is well designed, interesting to teach, accessible to learners. It explains what your learners need to know, how they will be assessed, and the relationship between assessment objectives and the examination papers.

Specimen papers and mark schemes will help you familiarise your learners with exam requirements, command words in questions and how to answer questions that meet the assessment objectives.



Scheme of Work

This medium term teaching plan provides ideas about how to construct, pace and deliver Cambridge IGCSE (9–1) Art & Design 0989. The syllabus has been broken down into teaching units with suggested teaching activities and learning resources to use in the classroom. This document is a guide offering advice, tips and ideas to provide you with a basis to plan your lessons.

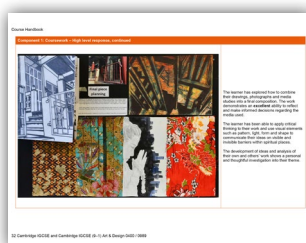


Example Candidate Resources (ECR)

ECR booklets use examples of candidates' work to show how different levels of performance relate to syllabus requirements. Each candidate response is annotated with examiner comments about where and why marks were awarded or omitted. This is followed by comments on how the answer could be improved. There is also a list of common mistakes and guidance for candidates.

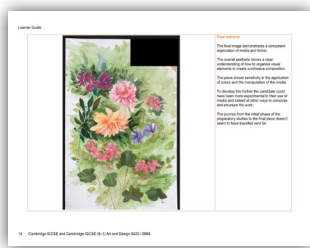
Marking Standards

These standards help teachers understand what is expected of learners across the range of marks, with the purpose of supporting their teaching. They complement the Example Candidate Responses, which contain detailed examiner comments, demonstrating how the mark scheme is typically applied by examiners.



Course Handbook

The Course Handbook offers guidance on organising and planning your teaching and how to prepare your learners for the assessed elements of the syllabus. It also offers advice on the requirements of the syllabus and provides examples of candidate work which demonstrate how the assessment criteria are applied.



Learner Guide

Learners can use this guide to develop an understanding of the Cambridge course and how it will be assessed, helping to increase their confidence. The guide describes each exam paper and includes useful advice to help your learners understand what to expect in the Cambridge exams. There is some suggested help with revision and an example candidate response to demonstrate the Cambridge standard (available soon).

Art & Design Support Blog

Supporting art and design teachers through technology and innovation.

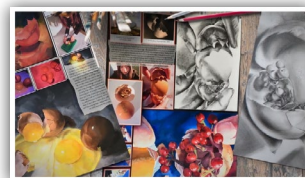


Art & Design forum

The School Support Hub hosts an active Art & Design forum, which is a great way for you to keep up to date with your subject. Ask questions, get the latest information and connect with other Cambridge teachers around the world.

The Cambridge Sketchbook App

A user friendly resource to enhance the experience of studying and teaching Art & Design.



Video: The creative process in Art & Design

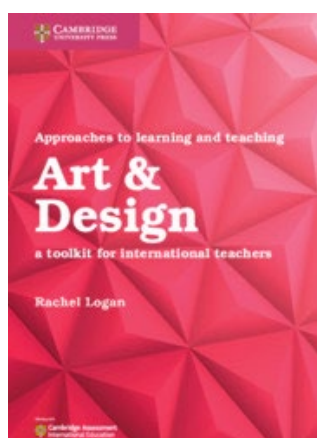
This video demonstrates the steps involved in the creative process in Art & Design. It shows how learners should move from their initial ideas and research, through experimentation and evaluation to their final outcome.

Endorsed resources

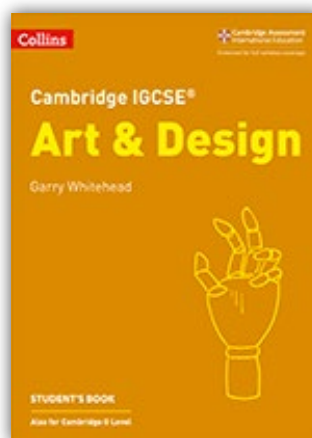
Our public website contains a list of endorsed textbooks for Cambridge IGCSE (9–1) Art & Design 0989. Many of our syllabuses are supported by a range of different endorsed textbooks and teachers are advised to choose the endorsed textbook that best suits their needs. There is information on the back of endorsed textbooks about which syllabus the book supports and the year of first examination of that syllabus.

Endorsed resources go through a rigorous quality-assurance process to make sure they closely reflect the syllabus and are appropriate for Cambridge schools worldwide. Resources may be endorsed for full syllabus coverage or endorsed to cover specific sections, topics or approaches. Look for the specific 'endorsed for' logo on the resource.

Cambridge University Press & Assessment



Collins



For further information on endorsed resources and their approaches to teaching and learning, go to the 'Endorsed resources' tab on the relevant syllabus page of our public website.

Cambridge Assessment International Education
The Triangle Building, Shaftesbury Road, Cambridge, CB2 8EA, United Kingdom
t: +44 1223 553554
e: info@cambridgeinternational.org www.cambridgeinternational.org