



Candidate Name

If not already printed, write name in CAPITALS and complete the Candidate No. grid (in pencil).

Candidate's Signature

Examination Title

Centre

Supervisor:

If the candidate is ABSENT or has WITHDRAWN shade here

Centre No.

Candidate No.

Examination Details

0	0	0
1	1	1
2	2	2
3	3	3
4	4	4
5	5	5
6	6	6
7	7	7
8	8	8
9	9	9

Multiple-choice Answer Sheet

Instructions

Use a soft pencil (B or HB).

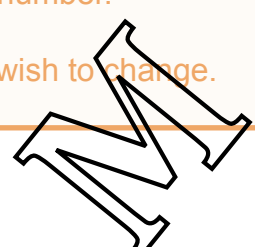
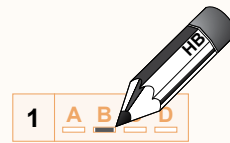
Shade ONE letter only.

Make sure you put your answer in line with the correct question number.

Rub out any answer you wish to change.

Example:

For question 1, if you think B is the right answer, fill in your answer sheet like this:



Questions 1 to 6				
1	A	B	C	D
2	A	B	C	D
3	A	B	C	D
4	A	B	C	D
5	A	B	C	D
6	A	B	C	D

Questions 7 to 14			
7	A	B	C
8	A	B	C
9	A	B	C
10	A	B	C
11	A	B	C
12	A	B	C
13	A	B	C
14	A	B	C

Questions 15 to 19			
15	A	B	C
16	A	B	C
17	A	B	C
18	A	B	C
19	A	B	C

Questions 20 to 24						
20	A	B	C	D	E	F
21	A	B	C	D	E	F
22	A	B	C	D	E	F
23	A	B	C	D	E	F
24	A	B	C	D	E	F

Questions 25 to 30			
25	A	B	C
26	A	B	C
27	A	B	C
28	A	B	C
29	A	B	C
30	A	B	C

